

Connecting to Grace and using Stata from an Xinteractive perspective

Prior to using Grace you will need to register for an account. This can be done from the link below. We aim to setup all new accounts within 2 working days.

You will receive a confirmation email which will detail how to use Grace once your account has been created.

This guide assumes you are attempting to connect to Grace using Windows 7.

[Apply for Grace HPC account](#)

Prerequisites

1 = Xming or an alternative X11 client will need to be installed if you wish to use Stata in a Xinteractive fashion (GUI driven environment). Xming is installed on all campus computers by default. For the remainder of this document we assume that you are using Xming.

If you require a copy for personal use, it can be downloaded from the following link free of charge.

<http://sourceforge.net/projects/xming/>

PuTTY also needs to be installed on your PC. This is installed on all campus PC's by default.

It will need to be configured as discussed further on in this document.

If you require a copy for personal use, it can be downloaded from the following link free of charge.

<http://www.chiark.greenend.org.uk/~sgtatham/putty/download.html>

Getting Started

Starting an Xinteractive Stata session on Grace


An Xinteractive session is simply a session with a graphical user interface (GUI). Operating in this mode will mimic having Stata installed on your PC.

Further information on Job types: Xinteractive, Interactive, and batch can be found on our website

Launching Xming

Image 1



1. Select the Windows Orb button 
2. Navigate to the UEA Network Applications folder
3. Click on the Xming icon [Image 1]
4. Xming is now running



Xming will minimize itself to the system tray.

Launching Putty

Image 2



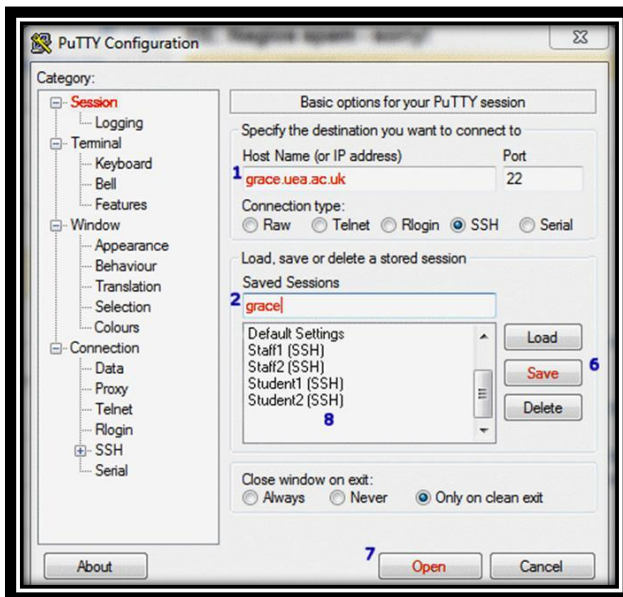
1. Select the Windows orb button
2. Navigate to “UEA Network applications”
3. Select “SSH Login (Putty)” [Image 2]



The first time you use Putty, you will have to configure and Save a session. Subsequent sessions can then utilize the stored session. Thus configuration is only done once. A Putty configuration document can be found [here](#)

Configuring Putty

Image 3



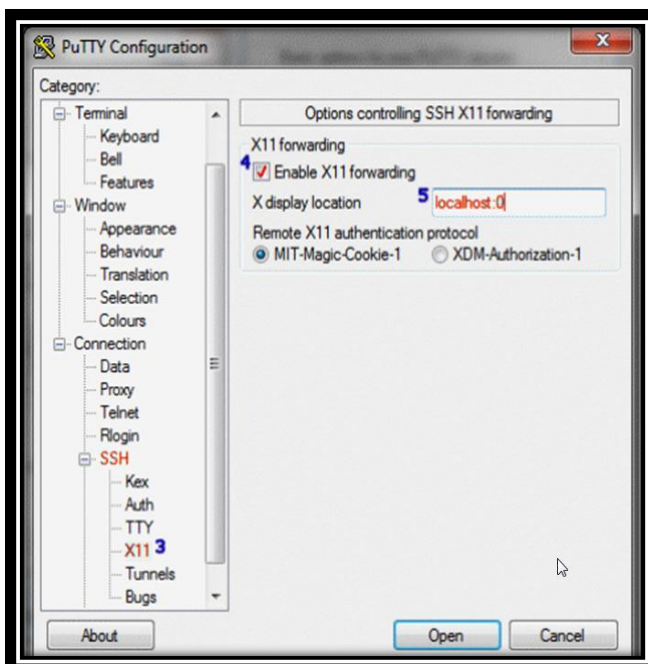
1. Enter the Host Name [Image 3]
2. Enter the Session Name [Image 3]



Host Name = grace.uea.ac.uk

Session Name = Grace

Image 4



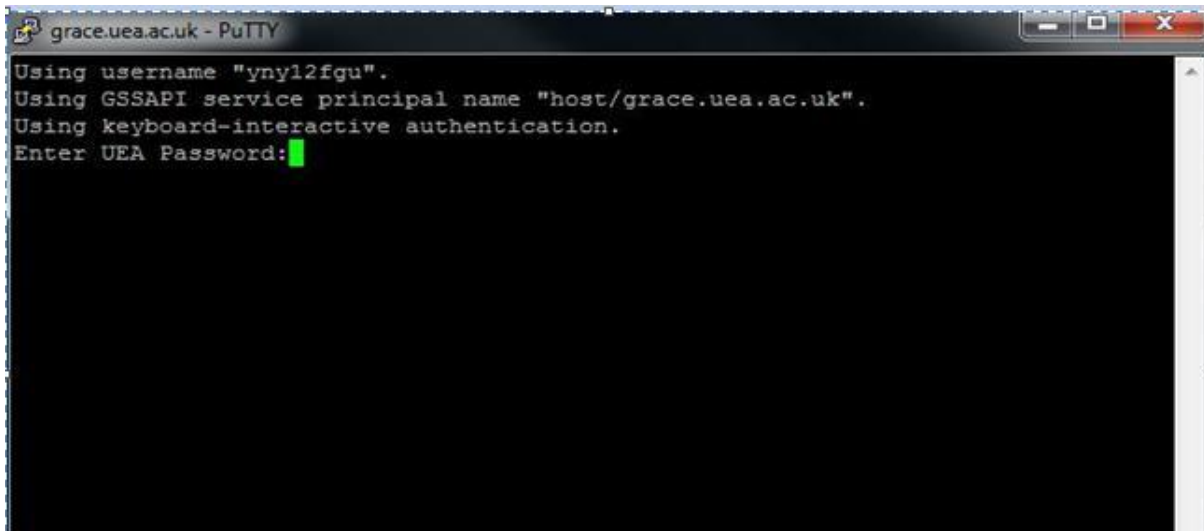
1. Expand the "SSH" menu and
2. Select "X11" [Image 4/Number 3]
3. Tick "Enable X11 forwarding"
4. Type "localhost:0"
5. Scroll up and select "Session"
6. Click "Save"
7. Click "Open" to start a Grace session



When using Putty for subsequent sessions you can double click on the previously saved session. Which we created above "Grace"

- You should now see something very similar to Image 4
- Note that your UEA username has already been piped into putty for you
- Enter your password at the prompt and then hit “Enter”

Image 4

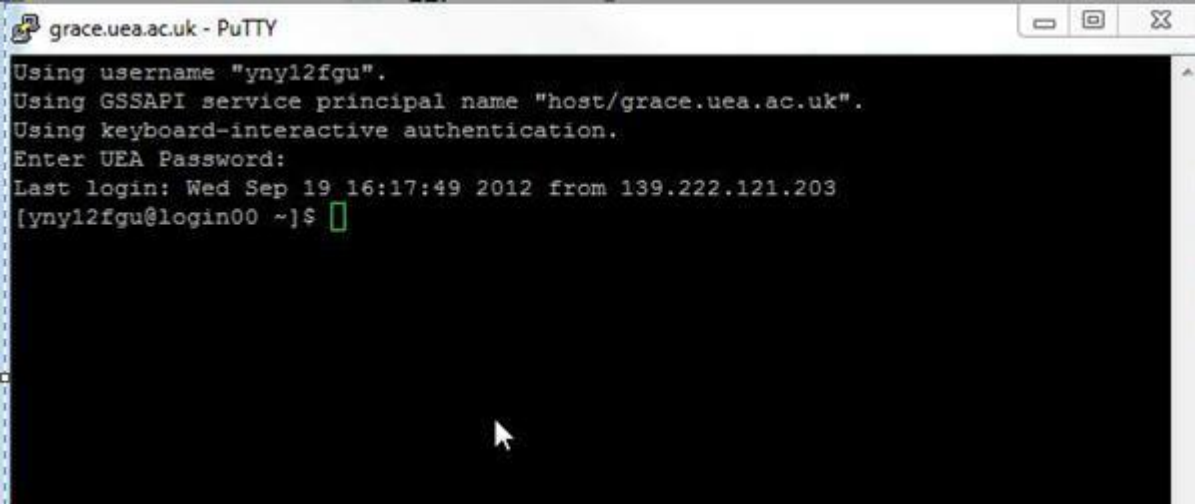


- Once you have successfully logged in you should see a similar representation to Image 5



Cursor blinking is disabled at the password prompt so the cursor will not blink as you type.

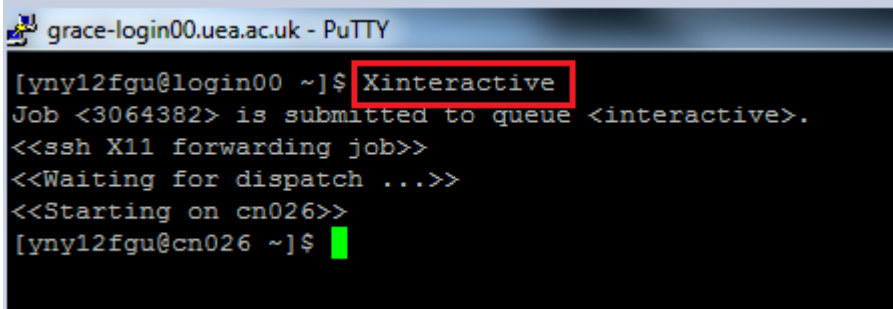
Image 5



```
grace.uea.ac.uk - PuTTY
Using username "ynyl2fgu".
Using GSSAPI service principal name "host/grace.uea.ac.uk".
Using keyboard-interactive authentication.
Enter UEA Password:
Last login: Wed Sep 19 16:17:49 2012 from 139.222.121.203
[ynyl2fgu@login00 ~]$
```

- To start a session for stata-se single core version, type “Xinteractive” [Image 6]

Image 6



```
grace-login00.uea.ac.uk - PuTTY
[ynyl2fgu@login00 ~]$ Xinteractive
Job <3064382> is submitted to queue <interactive>.
<<ssh X11 forwarding job>>
<<Waiting for dispatch ...>>
<<Starting on cn026>>
[ynyl2fgu@cn026 ~]$
```

Important Note...

If when you type **Xinteractive** the terminal hangs on “<<Waiting for dispatch>>”, it is probably due to there being no interactive sessions available. If you are unable to start a session within 15 minutes please email hpc.admin@uea.ac.uk

- Once the above has completed, enter “module add stata/13” [Image 7]
- Launch stata with the command “xstata-se” [Image 7]
- You should now have the familiar Stata GUI in front of you [Image 8]

Image 7

```

grace-login00.uea.ac.uk - PuTTY
[yny12fgu@login00 ~]$ Xinteractive
Job <3064390> is submitted to queue <interactive>.
<<ssh X11 forwarding job>>
<<Waiting for dispatch ...>>
<<Starting on cn026>>
[yny12fgu@cn026 ~]$ module add stata/13
[yny12fgu@cn026 ~]$ xstata-se
[yny12fgu@cn026 ~]$ █

```

Image 8

