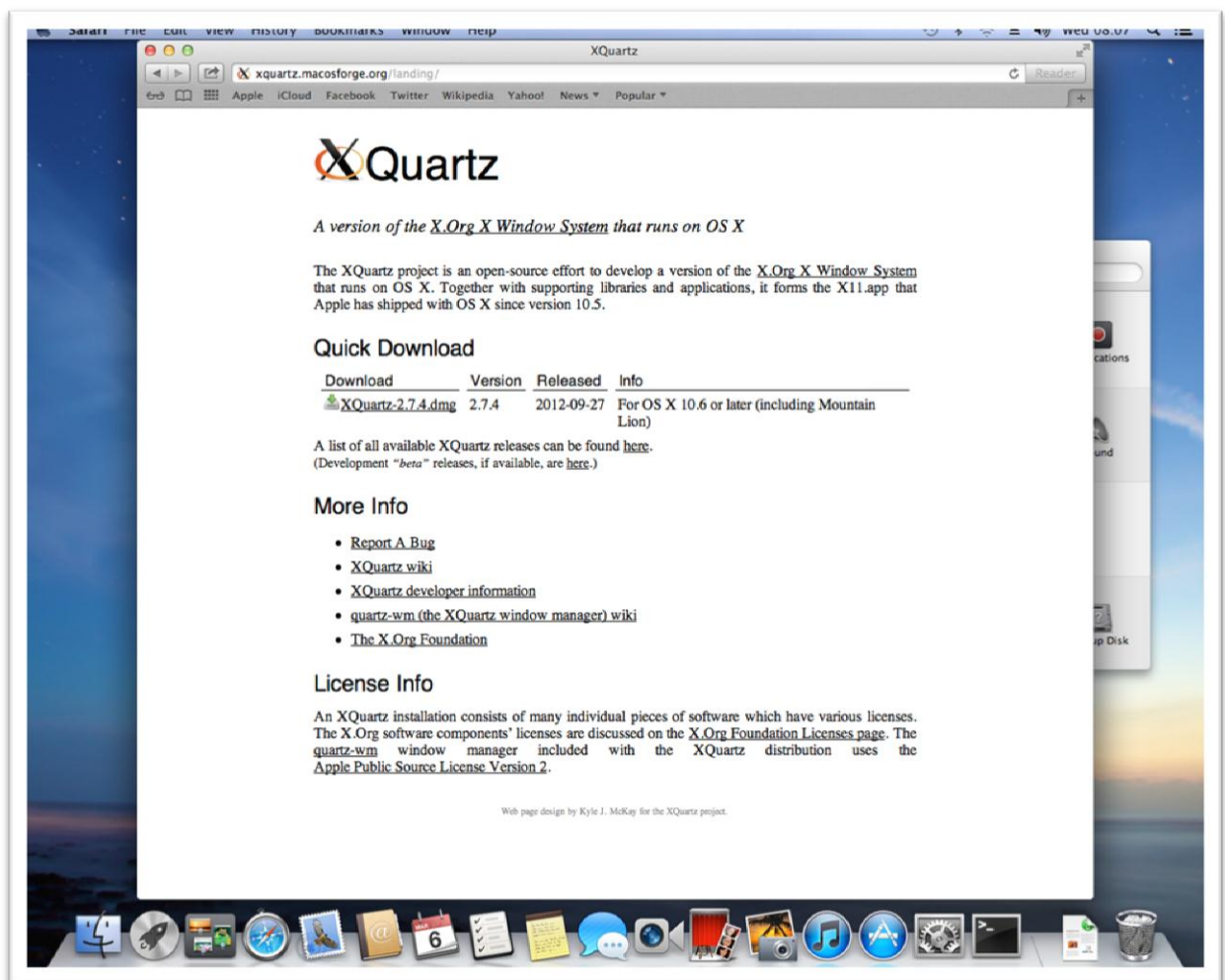


## Mac OS X Important Note for X11

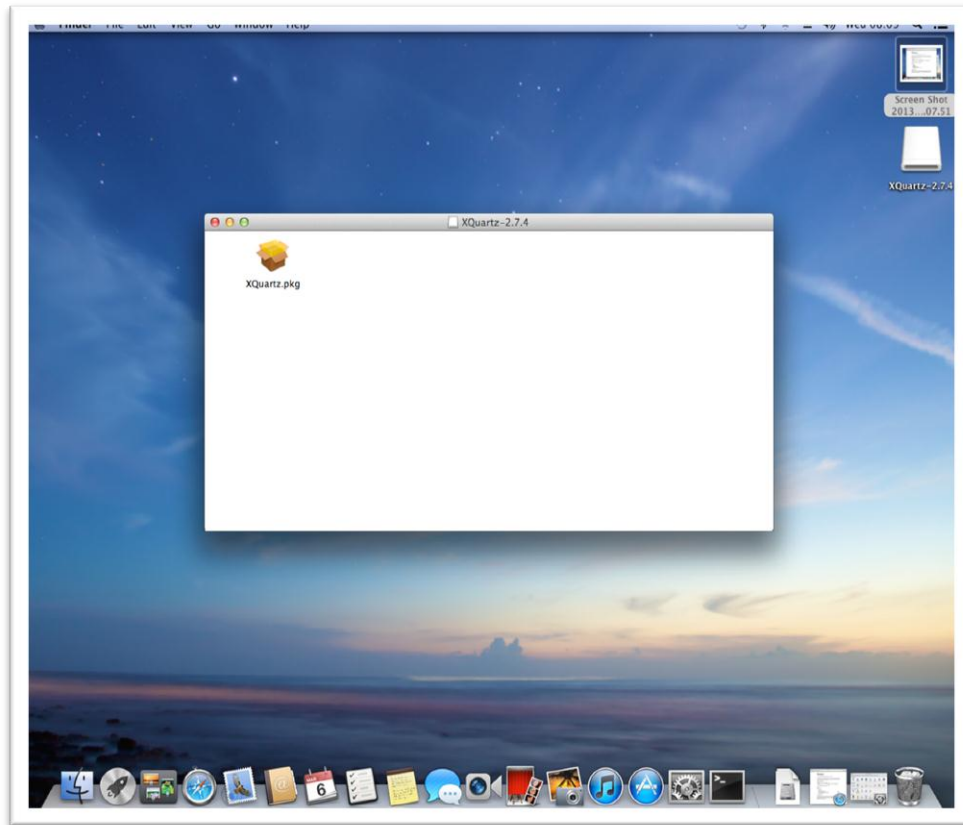
Apple have decided not to include an X11 client by default with its latest version of OS (Mountain Lion) If you want to use an application in a way which requires X11 (Graphical User Interface) then, please see the following details below.

1. Download the XQuartz package from <http://xquartz.macosforge.org> (Image 1)  
Image 1



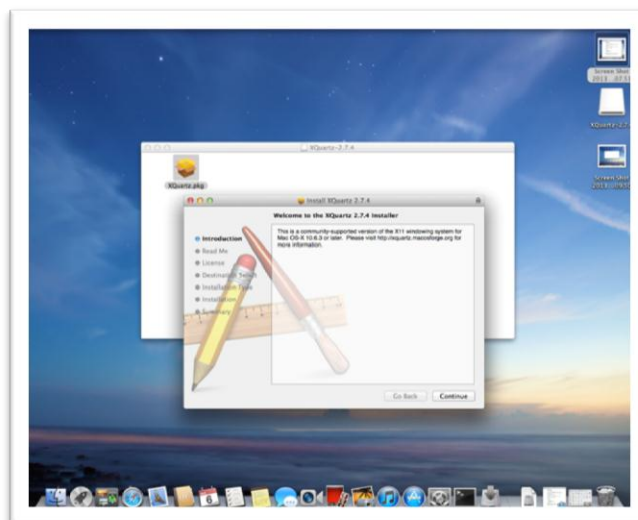
2. Double click the package to begin the install ( Image 2)

Image 2



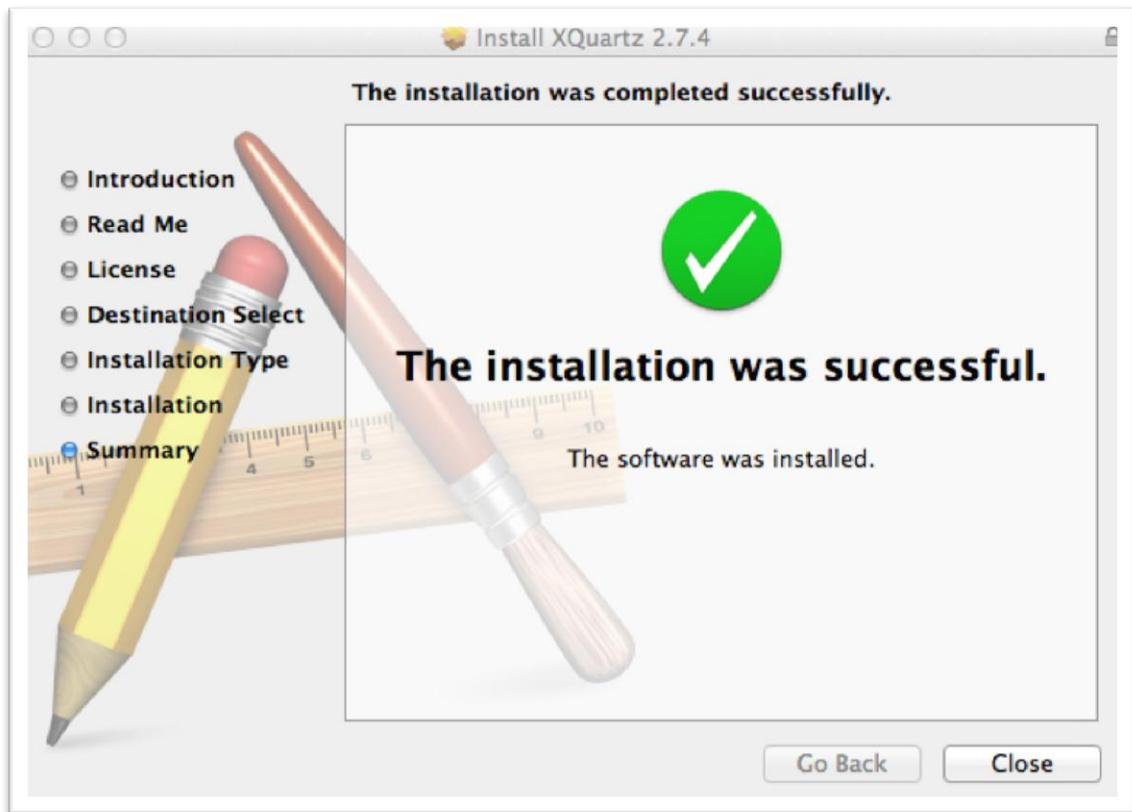
3. Click "continue" and then "Install" when prompted (Image 3)

Image 3

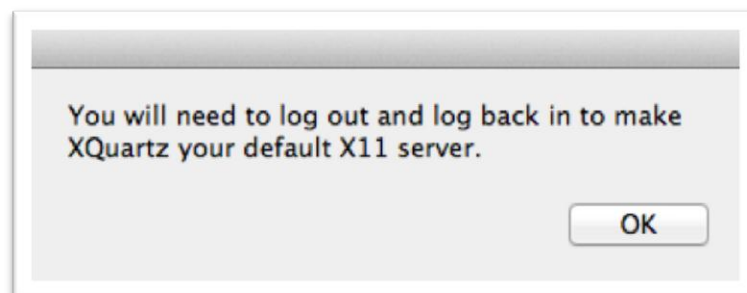


4. Once the installation is complete you should be notified (Image 4) – Click “Close”

Image 4



5. You should now receive a message, asking you to log out so that the X11 changes can be made.



6. Once you have logged out and back in again, you should be able to use X11 as normal (Example shown below)

ssh - XY [username@grace.uea.ac.uk](mailto:username@grace.uea.ac.uk)