

Managing your files on the cluster (Mac/Linux/Windows)

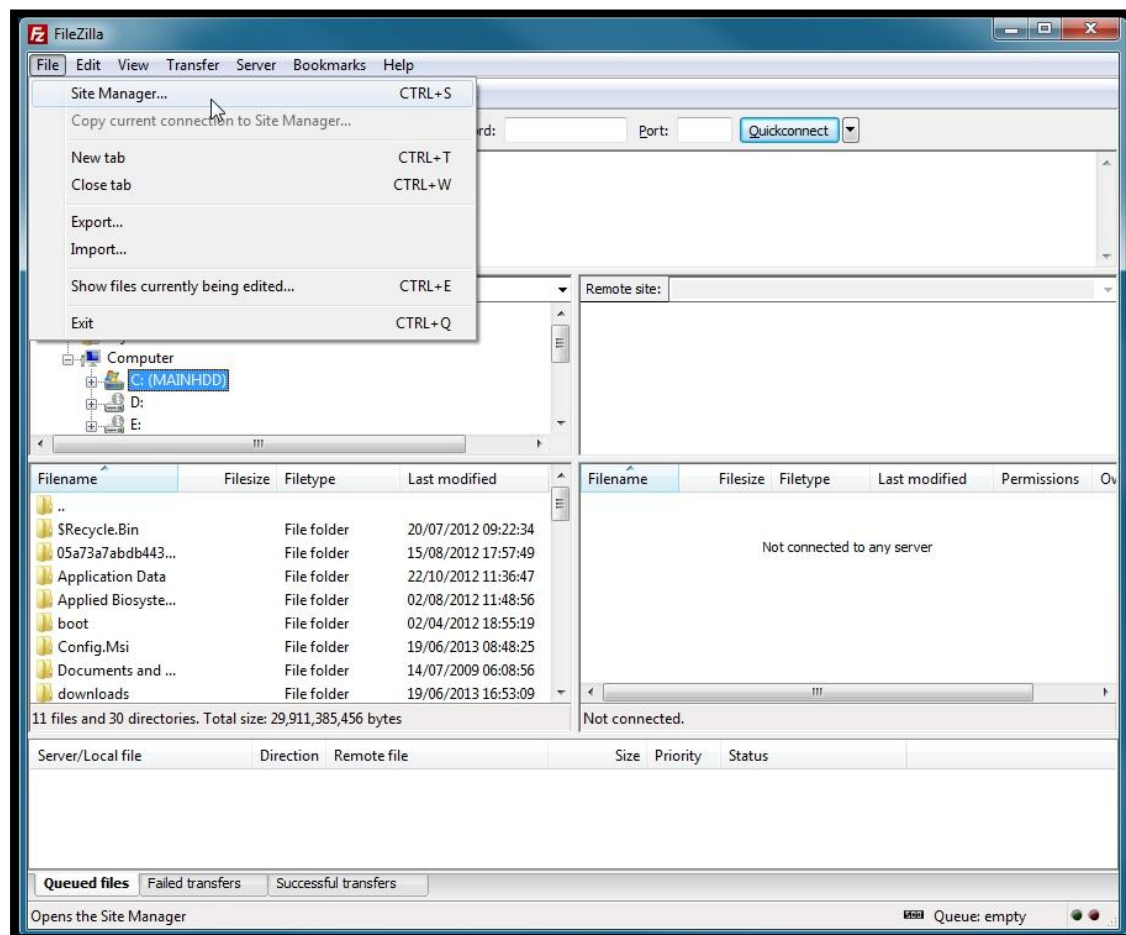
HPC users are able to manage their files on the cluster using a freely available application called [FileZilla](#). Ensure that you download the appropriate version for your operating system.

Configuration

Once you have installed the FileZilla client, configure it as follows.

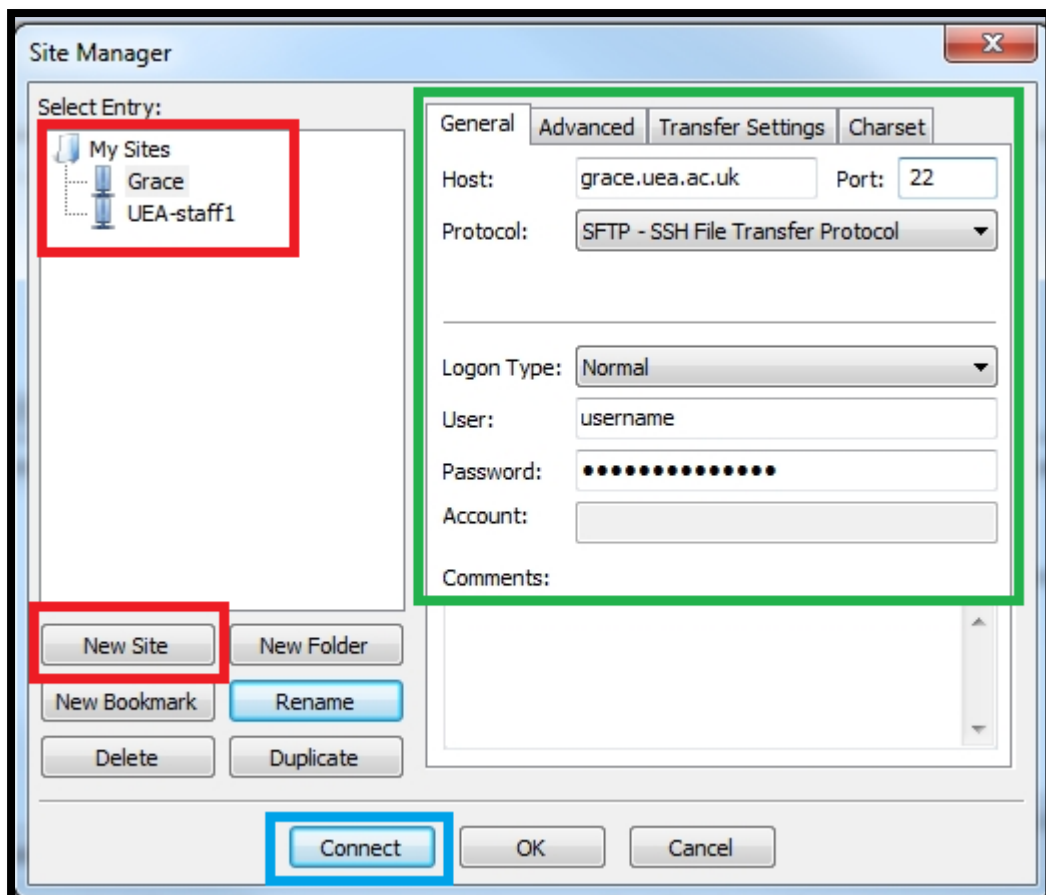
- Open FileZilla and “Site Manager” from the “File” menu (Image 1)

Image 1



- Select “New Site” (Image 2 –Red)
- With your New Site created, call it something appropriate (Grace in this example – Image 2 -Red)

Image 2



- In the text box entitled “Host” enter “grace.uea.ac.uk” (Image 2 –Green)
- In the text box entitled “Port” enter “22” (Image 2 –Green)
- From the dropdown menu entitled “Protocol” select as shown in (Image 2 – Green)
- From the dropdown menu entitled “Logon Type” select as shown in (Image 2 –Green)
- Once you have completed the above – click “Connect” as shown in (Image 2 – Blue)

- Once you have connected to the cluster you should see something that resembles image 3 below. The left hand side of the screen “Local site” (Highlighted in red) denotes your PC. Use the menus to navigate to your files on your local PC
- The right hand side of the screen “Remote site” represents your storage area on the cluster “/gpfs/dept/username”
- You can move files between your PC and the cluster by simply dragging and dropping them

Image 3

