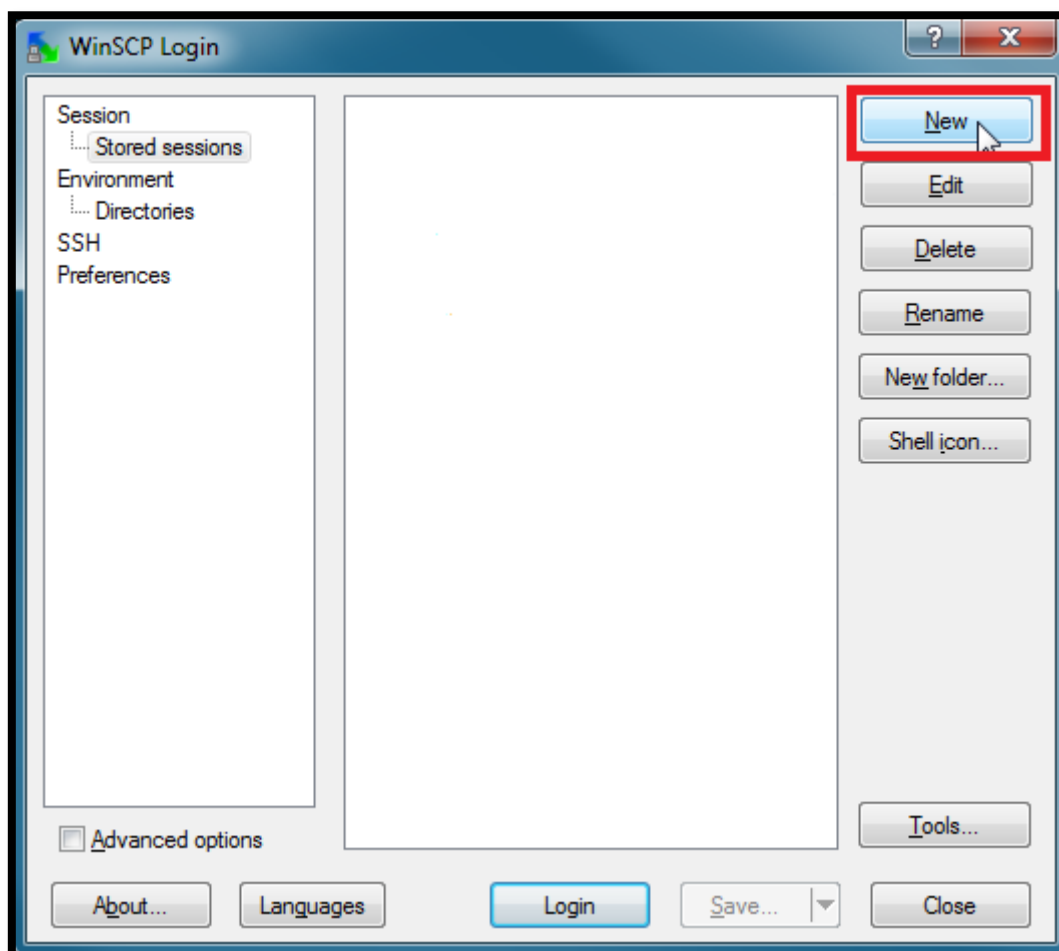


WinSCP can be used to move files to and from the cluster. You can also use it to visualize your files on the cluster.

Use the following guide to configure WinSCP.

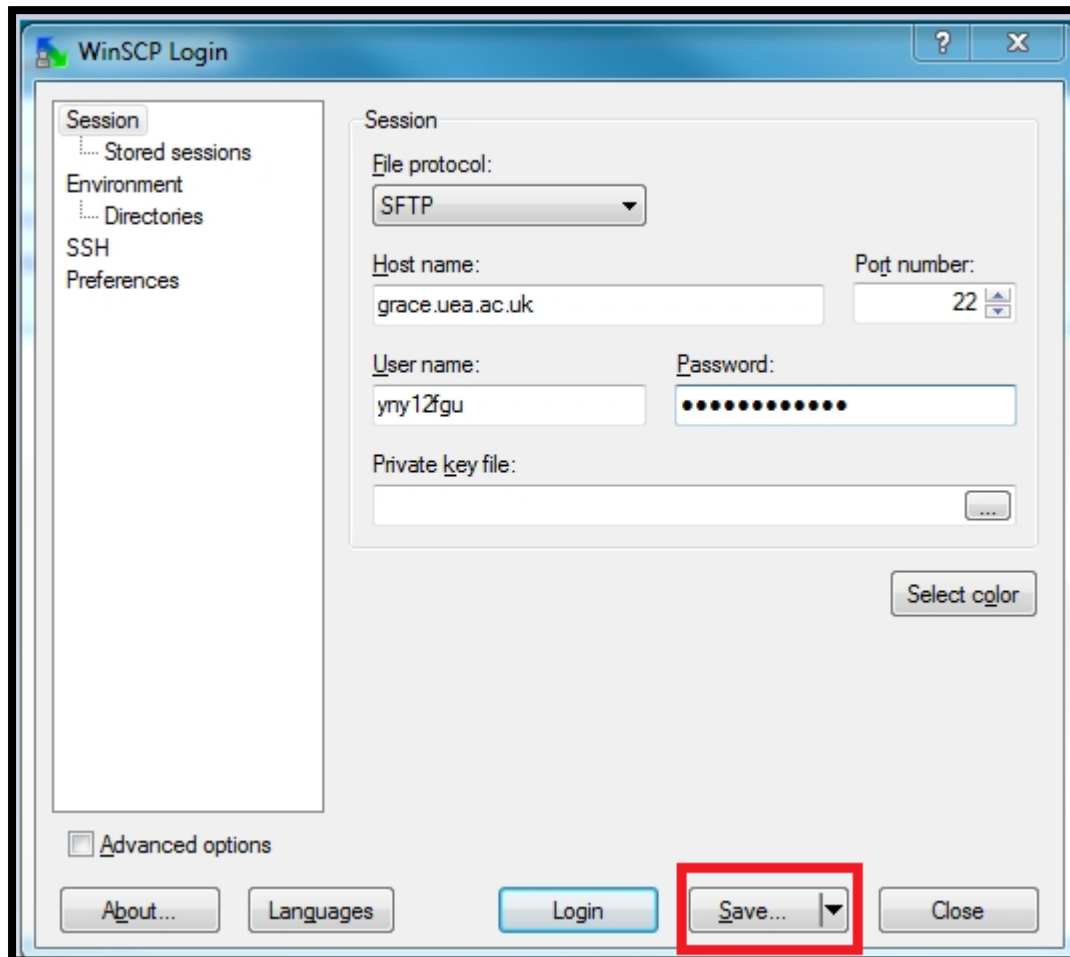
- If you are using a UEA managed computer running windows, WinSCP should be installed by default. If you would like to use it on a personal computer running windows, you will need to download and install it from the following [link](#)
- Once you have WinSCP installed on your system you need to open it from the start menu
- Click on the “New” button (Image 1)

Image 1



- Enter the details as shown below (Image 2) and click “Save”

Image 2



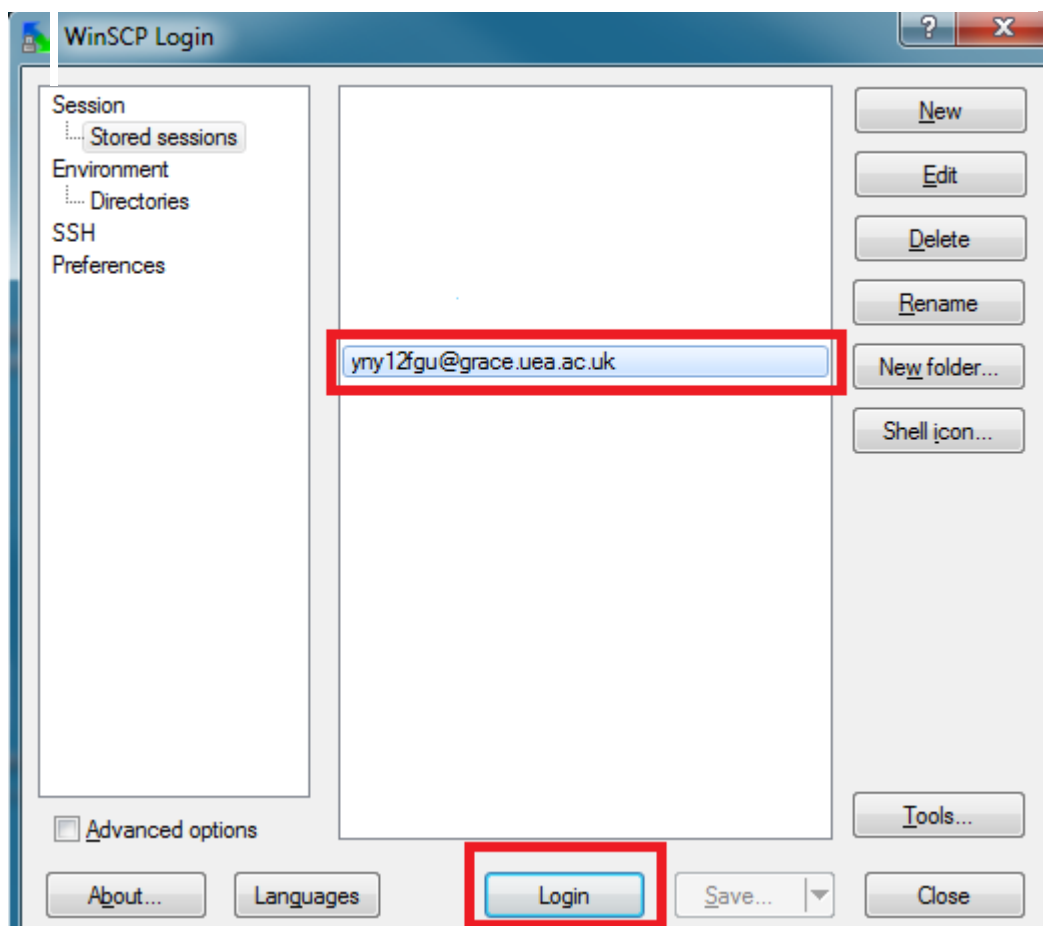
- This should result in a similar depiction to Image 3
- Click “OK” (Image 3)

Image 3



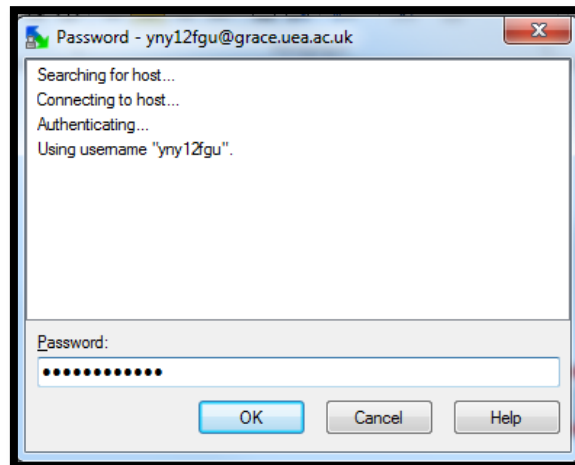
- Select the saved session and click “Login” (Image 4)

Image 4



- Enter your password and click “OK” (Image 5)

Image 5



You should now see something that resembles Image 6. The left hand side of the image (marked in red) represents your local computer and the right hand side of the image represents the cluster storage area. Files and alike can be moved between local computer and the cluster by using normal windows methods (drag & drop, cut & paste, copy & paste)

Image 6

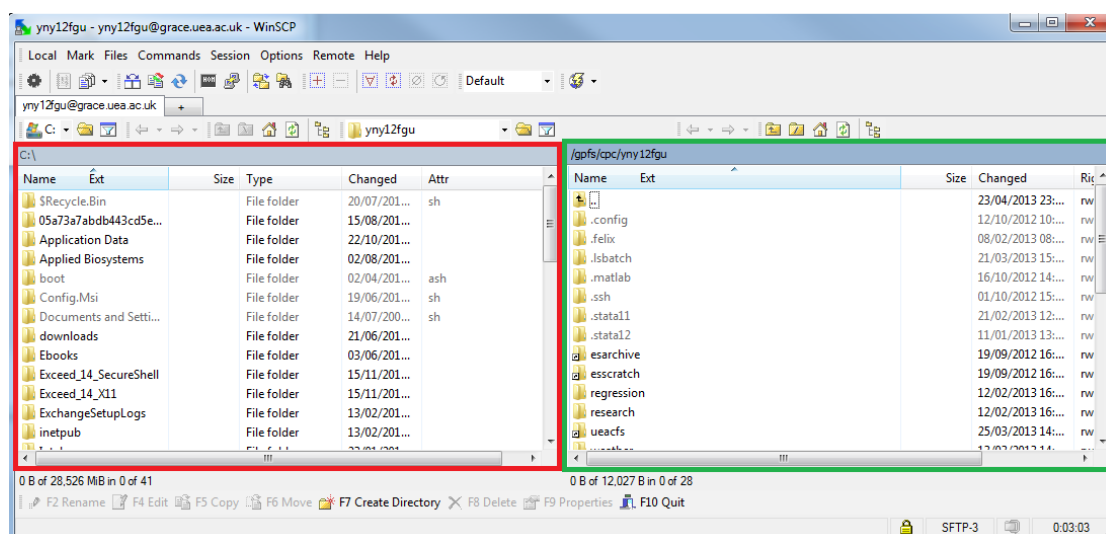


Image 7

It is also possible to drag and drop from outside of the application (As shown in Image 7) where a file named “data.txt” is being dragged directly from the desktop to the “regression” directory on the cluster.

